

imageCLASS MP390 All-in-One Printer

Canon

advanced simplicity™



**The quality all-rounder for printing, faxing,
copying, scanning and direct printing.**

imageCLASS MP390 All-in-One Printer

ALL YOUR OFFICE NEEDS

The imageCLASS MP390 has the versatility, practicality and quality needed to handle a wide range of tasks with ease. You can print photos, documents, scan images for homework projects, copy household receipts as well as send and receive faxes, all from one machine. Print and copy at speeds of up to 18 pages per minute (ppm) black and white and up to 12 ppm in colour; or create photo quality, borderless prints. Fax in black and white or colour, or scan in amazing 1200 x 2400 dpi resolution. Add to this the convenience of direct printing from any PictBridge compatible digital camera, and the imageCLASS MP390 isn't just an asset, it's all your office needs in a single desktop solution.

PHOTO-LAB QUALITY PRINTS

- Uses PictBridge technology to print photos directly from any compatible digital camera, regardless of brand, via a single cable. Simply view and select images on your camera's LCD screen and print direct – without needing a computer.
- Prints directly from your digital camera's memory card. Simply insert the memory card from your digital camera into the memory card slot and print your selected photos. Accepts Compact Flash (type I & II), Smart Media, SD card, Memory Stick, Multimedia card and Microdrive.
- Allows you to preview thumbnail images of all your photos, using Photo Index Sheet, so you can select your favourites to print.
- Creates borderless, full-bleed photo prints on A4, 5" x 7" and 6" x 4" at up to 4800 x 1200 dpi resolution, for that professional photo-lab style finish.
- Canon's Advanced MicroFine Droplet Technology™ produces razor sharp images by combining microscopic 2 picolitre and 5 picolitre ink droplets to be consistently placed with extreme precision. This eliminates graininess to produce higher definition images and more accurate colour gradations.



Camera not included



Print directly from your camera's memory card. Use the Photo Index Sheet for image preview and selection



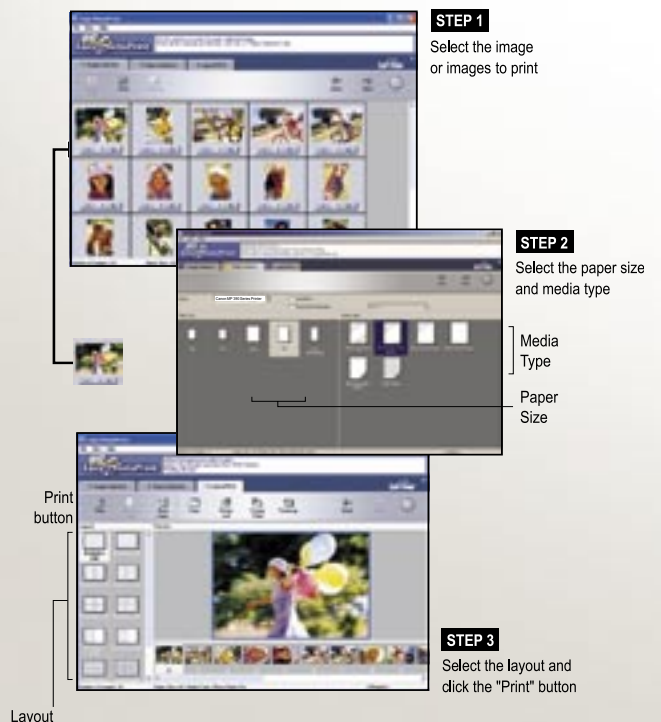
Image simulation

MicroFine Droplet Technology eliminates graininess to produce razor sharp images

ADVANCED SOFTWARE

- **Easy-PhotoPrint/Easy-PhotoPrint Plus** – Produce high quality photos in just three easy steps. Its compatibility with the digital camera Exif Print standard means that photographic prints remain faithful to the photographer's original vision.
- **Easy-WebPrint** – Ensures that the right-hand side of webpages is not cut off when printed.

Easy-PhotoPrint





RELIABLE DOCUMENT PRINTING

- Prints up to 18 pages per minute (ppm) black and white text and up to 12 pages per minute (ppm) in colour¹.
- Performs all operations quietly, making it perfect for home or small office environments.

FAST, FULLY-FEATURED FAXING

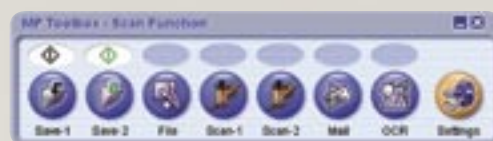
- High-speed black and white faxing at around 3 seconds per page² thanks to a Super G3 fax modem.
- Acts as a standalone colour to colour fax without the need of a computer.
- Stores up to 200 pages in its fax memory² to ensure no lost messages should paper or ink run out.
- Offers easy access to frequently used numbers with speed dials for up to 40 different locations.
- Features PC fax (sending only), FAX/TEL auto switch, Telstra FaxStream Duet compatible⁷ and answering machine connection.



The user-friendly control panel allows access to photo printing, faxing and copying without the need for a computer

ACCURATE SCANNING

- Delivers accurate colour scans at up to 1200 x 2400 dpi resolution. The user-friendly interface and flatbed design makes the scanning process quick and simple.
- Provides added clarity and detail to scans with its scanning depth of 48/24 bit.
- Scans a number of photos in a single scan and aligns them automatically, using Multi-Photo mode³.
- Attaches scanned images or documents directly to emails using its scan-to-email function⁴.
- Creates a PDF file that can be easily stored or emailed using its scan-to-PDF function.



Use the MP Toolbox to scan images directly to email⁴ and to PDF

CONVENIENT COPYING

- Copies at speeds of up to 18 copies per minute (cpm) black and white and up to 12 cpm colour¹.
- Borderless copying on A4, 5" x 7" and 6" x 4"¹⁵.
- Allows bulky items such as books to be easily copied with the help of its flatbed design and Z-lid.
- Offers a versatile zoom range from 25% up to 400%.
- Provides a range of advanced copy functions, including; Mirror Image, Image Repeat and 2-in-1 copy.



Multi-Photo mode allows you to scan multiple images at one time³



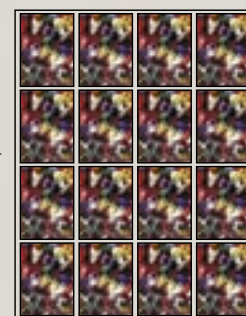
Advanced Z-lid allows bulky items to be scanned and copied

ADDITIONAL FEATURES

- Uses a Hi-Speed USB 2.0 interface that allows swifter processing times between the unit and your computer, making printing and scanning functions a breeze.
- Works with a variety of papers such as Photo Paper Pro, Photo Paper Plus Glossy, Transparencies and Matte Photo Paper.
- Supports Windows[®] 98/Me/2000/XP[®] operating systems.



Original image



Result of Image Repeat function



imageCLASS MP390 All-in-One Printer Specifications

MACHINE TYPE Flatbed Bubble Jet All-in-One Printer		Image Processing System	Ultra High Quality (UHQ)
AVAILABLE FUNCTIONS Print, Fax, Copy, Scan with direct printing		Fax Memory	Approx. 200 pages ²
DIRECT PRINT FUNCTIONS		Speed Dials	Coded dials: 40 locations
PictBridge Compatible	Yes	Additional Features	Colour faxing, Redial, FAX/TEL auto switch, Telstra FaxStream Duet compatible ⁷ , answering machine hook up, Activity report
Acceptable Memory Cards	Compact Flash (type I & II), MicroDrive, Smart Media, SD card, Memory Stick, Secure Digital, MultiMedia card	COPIER FUNCTIONS	
PRINTER FUNCTIONS		Colour Copy	Yes
Printing Method	Bubble Jet Ink-on-demand with Advanced MicroFine Droplet Technology™	Density Adjustment	9 levels
Printing Speed ¹	Mono: Up to 18 ppm ¹ , Colour: Up to 12 ppm ¹⁷	Image Quality	Mono and colour mode: Fast, Normal, Fine
Printing Resolution	4800 x 1200 dpi	Copy Speed ¹	Mono: Up to 18 ppm Colour: Up to 12 ppm
Borderless Printing	A4, 5" x 7", 6" x 4"	Multiple Copy	99 copies
Ink Tank	BCI-24BK (Black), BCI-24C (Colour)	Reduction/Enlargement	25% to 400%
Ink Yield	Black approx. 300 pages – text pattern ^{*1} , Black approx. 580 pages – photo pattern ^{*2} , Colour approx. 160 pages – photo pattern ^{*2}	Special Copy Functions	2-on-1 copy, Image Repeat, Mirror Image, Fit to page, Entire Document
Paper Capacity	100 pages	Borderless Copy ⁵	A4, 5" x 7", 6" x 4"
Paper Type	Plain paper High Resolution Paper (HR-101N) Envelopes (DL size) Transparencies (CF-102) Glossy Photo Paper (GP-401) A4 or 6" x 4" Photo Paper Pro (PR-101) A4 Photo Paper Pro (PR-101) cards 6" x 4" Photo Paper Plus Glossy (PP-101) A4 Photo Paper Plus Glossy (PP-101) cards 6" x 4" or 5" x 7" Matte Photo Paper (MP-101) T-Shirt Transfers (TR-301)	SCANNER FUNCTIONS	
Supported Paper Sizes	A4, A5, B5, Letter, Legal, Envelopes (DL, US COM10), Photo cards 6" x 4" or 5" x 7"	Scanner Type	Flatbed scanner by CCD
Supported Paper Weights	64 to 105 gsm, supported Photo Paper Plus Glossy (PP-101) up to approx. 270 gsm	Scanner Resolution	1200 x 2400 dpi (up to 9600 dpi enhanced)
FAX FUNCTIONS		Colour Scanning Depth	48 bit input and 24 bit output
Standalone Fax	Yes	Compatibility	TWAIN Compliant
Transmission Speed	Mono: Approx. 3 secs per page ² Colour: Approx. 1 minute per page (based on Canon Colour Test Sheet)	Effective Scanning Width	214 mm
Modem Speed	Super G3 33.6 Kbps	PC INTERFACE & SOFTWARE	
PC Fax	Yes (sending only)	Interface Type	USB 2.0 Hi-speed
Compression Method	Mono: MH, MR, MMR, JBIG. Colour: JPEG	Supported OS	Windows® Me/2000/XP® (Macintosh® not supported)
		Included Software	Easy-PhotoPrint/Easy-PhotoPrint Plus, Easy-WebPrint, ScanSoft OmniPage SE OCR, ArcSoft PhotoStudio, Adobe Acrobat Reader
		GENERAL FEATURES	
		Weight	Approx. 8.5kg
		Power Source	AC 200 – 240V, 50 – 60Hz
		Power Consumption	Max: Approx. 48W Standby: Approx. 18W
		Dimensions (W x D x H)	454 x 358 x 249 mm (incl. tray)
		Included As Standard	imageCLASS MP390, Software Guide and Manual (CD-ROM), BCI-24Bk black ink tank, BCI-24C colour ink tank, Print head, Power cord

*1 1500 characters per page, normal text, at standard and plain paper mode with Windows® XP printer driver.

*2 Based on printing the ISO JIS-SCID no. 5 pattern at standard and plain paper mode with Windows® XP printer driver.



The one year warranty can be upgraded to 3 years for a minimal cost and is backed by Canon's Customer Care Info-Line support. Driver updates and Technical Support are also available from our websites – canon.com.au or canon.co.nz

PRINT SPEED GUIDES



†
Black Text
(MEMO) A4



††
Text & Photo A4



Canon Australia Pty. Ltd.
ABN 66 005 002 951

1 Thomas Holt Drive,
North Ryde, NSW 2113, Australia
Freecall: 1800 021 167
Facsimile No: + 61 2 9805 2632

Canon New Zealand Limited
Akoranga Business Park, Akoranga Drive
Northcote, Auckland, New Zealand
Freecall: 0800 222 666
Facsimile No: + 64 9 489 0380

canon.com.au
canon.co.nz
canon.com.au/digitalimage

Canon and the Canon logo are registered trademarks of Canon Inc. and 'advanced simplicity' is a trademark of Canon Australia Pty Limited. imageCLASS, MicroFine Droplet Technology, and the MicroFine Droplet Technology logo are trademarks of Canon Inc. Microsoft, Windows and the Windows Logo are registered trademarks of Microsoft Corporation in the United States and in other countries. All other trademarks are the property of their respective owners.

1. Print speed and copy speed may vary with the content of the document and the processing speed of the host computer.
 2. Based on Canon Standard Fax Chart No. 1 Standard mode.
 3. There are parameters to follow for positioning items on scanner.
 4. Users must provide their own email software.
 5. Specialty paper must be used for borderless copying. It must also be colour copies.
 6. USB 2.0 Hi-Speed performance requires Windows® XP Service Pack 1 or Windows® 2000 Service Pack 4 with pre-installed USB 2.0 High-Speed port.
 7. Where this service is available from your service provider (Australia only).
- Camera shown to demonstrate PictBridge functionality is not included with the imageCLASS MP390.

All specifications are subject to change without notice.

Canon Australia proudly supports recycling of printer cartridges through the Cartridges 4 Planet Ark programme.

